



ABOUT THE DELEGATE ASSEMBLY

CSBA’s Delegate Assembly is a vital link in the association’s governance structure. The Delegate Assembly sets the general policy direction for the association. Working with local districts, county offices, the Board of Directors and Executive Committee, Delegates ensure that the association reflects the interests of school districts and county offices of education throughout the state.

The Delegate Assembly is made up of approximately 270+ Delegates who are elected by local board members in 21 geographic regions throughout the state. Some geographic regions have been further divided into subregions. Ex-officio members of the Delegate Assembly with all privileges of membership include members of CSBA’s Board of Directors, past presidents of CSBA and the immediate past president of the California County Boards of Education.

Delegates serve two-year terms beginning April 1. They meet twice a year to conduct business, and may also meet with the other Delegates and the Director within their region. Furthermore, they participate in CSBA events and they maintain contact with local boards in their region.

BECOMING A DELEGATE

QUALIFICATIONS

To be eligible to serve on CSBA’s Delegate Assembly, a board member must:

- be a trustee of a district or county office of education that is a current member of CSBA; and
- be a trustee of a district or county office of education within the geographic region or subregion which the Delegate will represent.

TERM OF OFFICE

The term of office for each Delegate is two years and begins on April 1. Within each region, approximately half of the Delegates are elected in even-numbered years and half in odd-numbered years.

APPOINTMENTS TO THE DELEGATE ASSEMBLY

Districts with an ADA of 30,000–39,999 may appoint one Delegate. Additional appointments may be made as follows:

40,000–99,999 ADA | two Delegate seats

100,000–299,999 ADA | three Delegate seats

300,000 ADA or higher | seven Delegate seats

These districts also may participate in the nomination and selection of the other Delegates from that region or subregion.

NOMINATIONS AND ELECTIONS

NOMINATIONS

Nominations for Delegate Assembly seats are made each year between the last Friday in October and January 7.

A board member must be formally nominated by a board in the region or subregion and may be nominated by his or her own district or county office. The nomination is an action that is taken in a public board meeting and requires a majority vote. A board may nominate as many individuals as it wishes. Nominees must sign a confirmation that they are willing to serve. It is critical that nominations and biographical sketch forms be delivered to the CSBA office, faxed or postmarked on or before January 7; late nominations and biographical sketch forms will not be accepted.

ELECTIONS

Ballots are mailed by February 1 to each district or county board within the region or subregion which has a vacancy. Ballots must be delivered to the CSBA office or postmarked by March 15 in order to be accepted. Ballots may not be faxed.

Voting for Delegates is an action of the entire board rather than individual board members; therefore, it is done at a public meeting and requires a majority vote. Each board may vote for as many persons as there are positions to be filled within the region or subregion.

TIMELINE FOR DELEGATE ELECTIONS

Last Friday in October–January 7 | Nominations and biographical sketch are submitted by local boards.

February 1–March 15 | Local boards vote and return ballots to CSBA.

April 30 | Closing date for any runoff election held in regions or subregions with a tie vote.

By May 11 | Final results are distributed to the CSBA membership.

May Delegate Assembly | Seating of new Delegates.

ROLES AND RESPONSIBILITIES OF DELEGATES

Delegates set the general policy direction and fulfill a critical governance role within the association. They communicate the interests of local boards to CSBA’s Board of Directors, Executive Committee and staff. Delegates give policy and legislative direction through the adoption of CSBA’s Policy Platform every two years and the adoption of other policy statements as needed. They also speak on issues and provide direct advocacy on behalf of the association.

Delegates play an important communications and support role within their region. They also elect the association’s officers and Board of Directors. The authority and primary duties of Delegates are contained in the CSBA Bylaws.

DELEGATES’ ROLES AND RESPONSIBILITIES

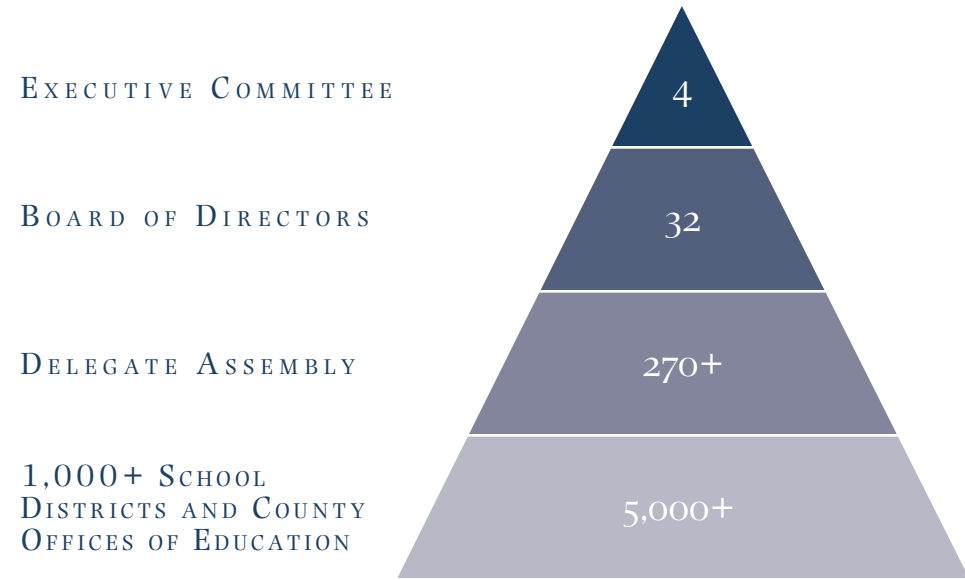
Primary responsibilities of Delegates include:

- providing a link to other public officials at the local, state and national levels;
- providing a communications link between local board members and the regional Director;
- attending all Delegate Assembly meetings;
- adopting the Policy Platform which guides the association’s policy and political leadership activities;
- as needed, adopting policies and positions to supplement CSBA’s Policy Platform;
- providing testimony and input on critical issues;
- electing the officers, Board of Directors and Nominating Committee members;
- adopting the association’s bylaws;
- serving on committees, task forces and focus groups; and
- supporting the association’s activities and events.



CSBA GOVERNANCE

Delegates and Directors are CSBA's key governance links. They enable the association to serve California's more than 1,000 school districts and county offices of education and its more than 5,000 locally elected school board members.



- 5,000+ school and county board members, divided into geographic regions
- 270+ Delegates elected by local boards in each CSBA region
- 32 Directors elected by the Delegate Assembly
- 4 officers elected by the Delegate Assembly, plus the Executive Director

CSBA GEOGRAPHIC REGION MAP



CSBA DELEGATE ASSEMBLY

PROVIDING LEADERSHIP FOR CALIFORNIA'S SCHOOL DISTRICTS AND COUNTY OFFICES OF EDUCATION

