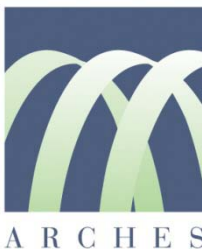


Lessons from an Emerging Collaborative

Southern Alameda County
Regional Educational Alliance

An ARCHES/ENLACE Project

CSBA Conference – San Diego
November 29, 2007



SACREA's **Organizational History**

***A Grassroots, Community-centric
Approach to a “Looming Crisis”***



ARCHES

Purpose of SACREA

- To engage in meaningful conversations with educators, students, and families
- To review promising practices
- To develop a plan of action to improve CST & CAHSEE passage rates of African American Students in Southern Alameda County



Demographics of the Collaborative's Schools and Communities

- 10 cities
- 10 K-12 districts
- Highly qualified teaching staff
- Diverse student population
 - 65% are non-white
 - 35% receive Free/Reduced Meal benefits
 - 10% receive Cal-Works benefits
 - 22% are English Learners



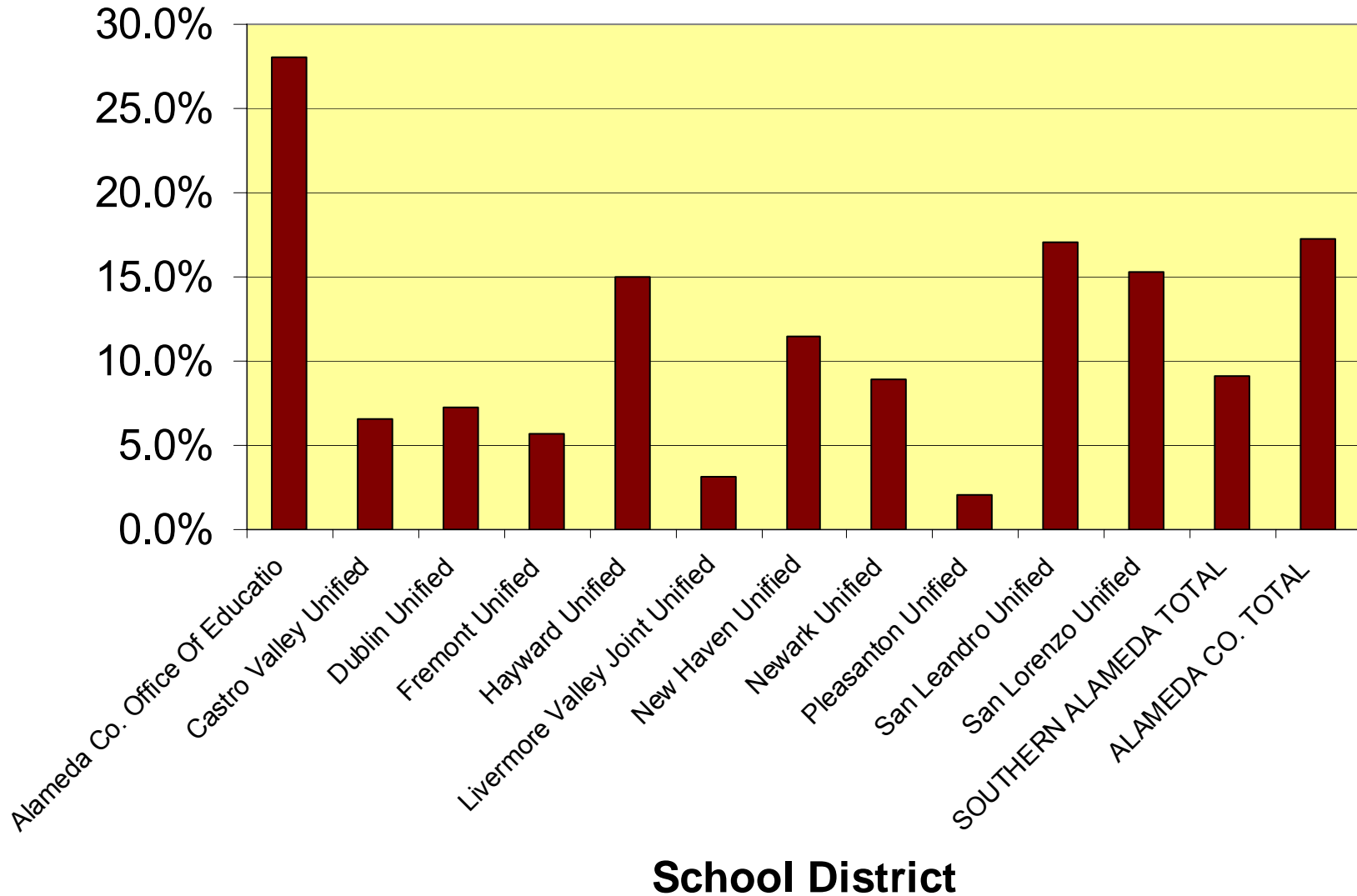
Rationalization for Selected Priority Area

- African American proportion of college students in California is the smallest in the U.S.
- Concentrated urban African American communities are rapidly dispersing
- Increases in the African American population are in the suburban and rural regions
- School districts are experiencing rapid changes in racial composition
- Urban communities are experiencing middle-class flight and brain drain



% African American Student Enrollment 05-06

Percentage of Total Student Enrollment

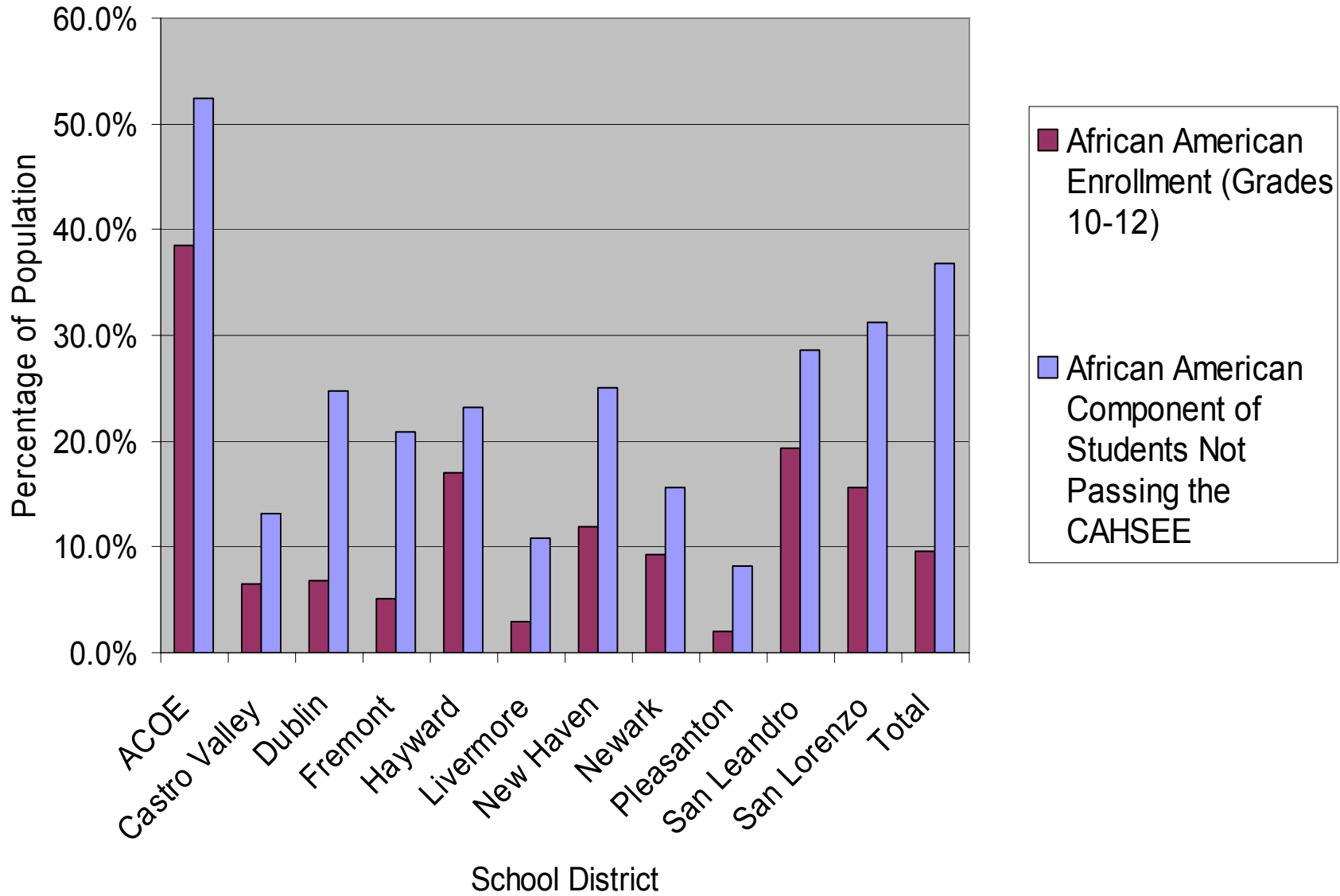


What We Know

African American students are not passing the CAHSEE at 2-3 times the rate of other students in Southern Alameda County



Percentage of African American Enrollment Compared to the African American Component of Students Not Passing the CAHSEE by District



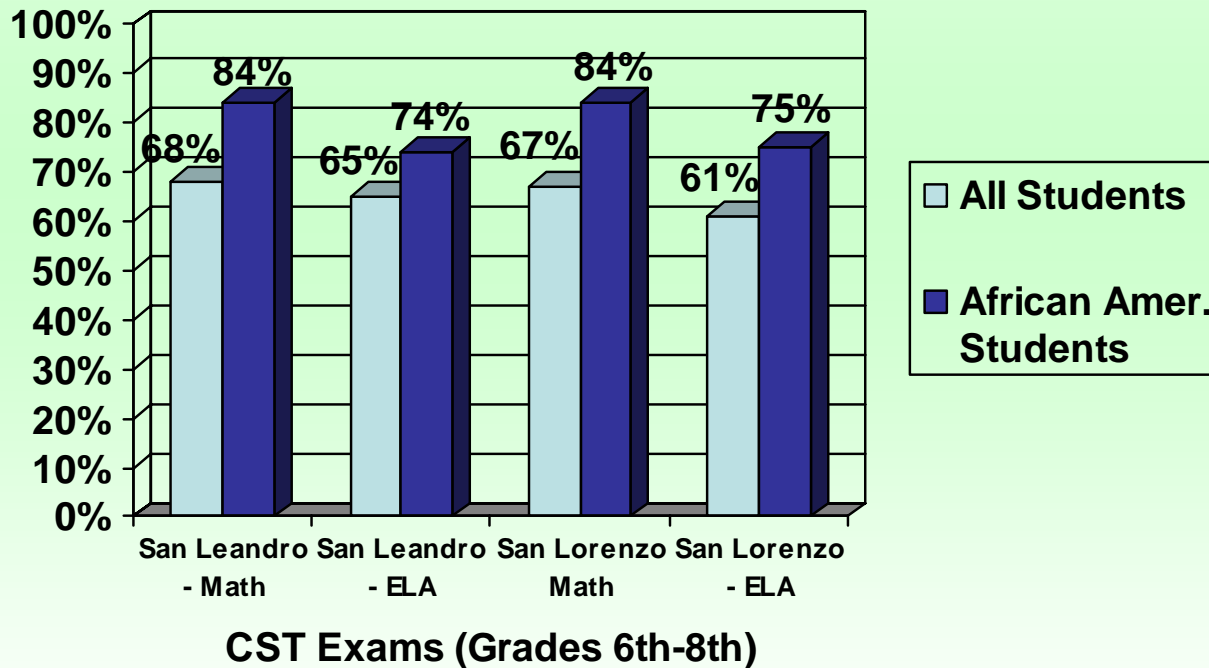
Rationalization for Focus on San Leandro & San Lorenzo

African Americans in these two districts are the largest subgroup scoring below and far below on the CST-STAR assessments.



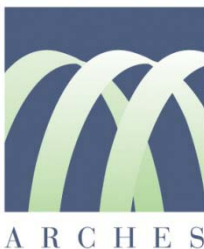
First Year Initiatives

Percentages of Students Scoring Below Proficient on the CST Exams, 2005-06



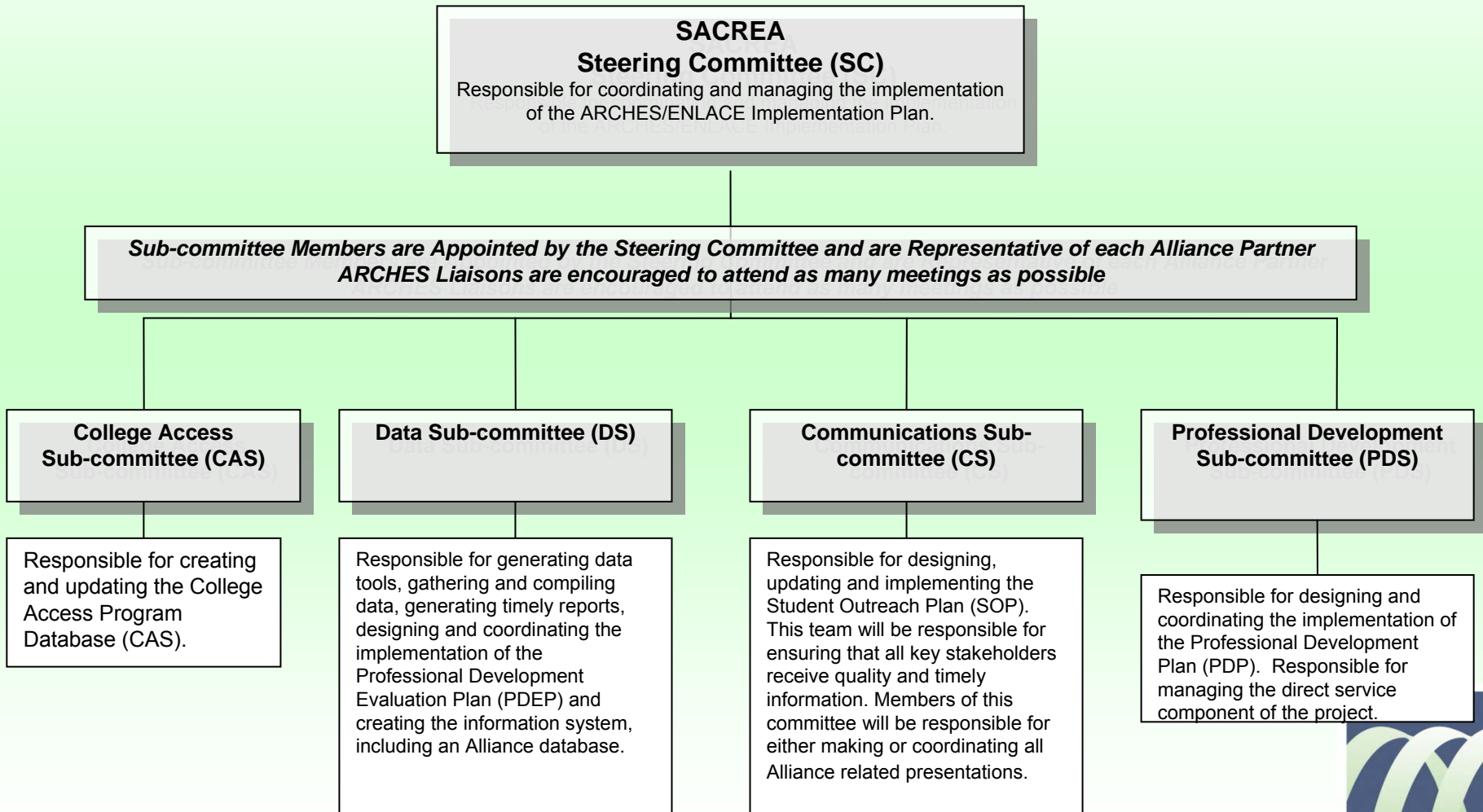
The Planning Process

- **Step 1:** Establish the Advisory Board and Appoint the Action Planning Team
- **Step 2:** Use Data to Identify Opportunities for Improvement
- **Step 3:** Assess Conditions for Change and Develop the Plan of Action
- **Step 4:** Support the Action Plan with Professional Development
- **Step 5:** Report the Results



SACREA Implementation Process

Organizational Structure



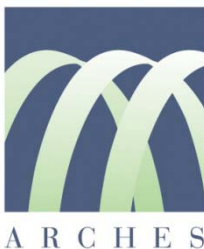
SACREA **Implementation Plan**



A R C H E S

Year 1 Focus:
San Leandro & San Lorenzo Middle Schools

- Student math initiatives
- Culturally relevant curriculum and development practices
- Provide academic support
- College awareness activities



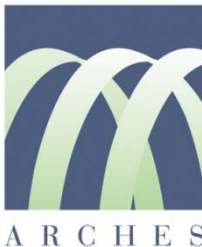
First Year Initiatives

1. College Awareness Activities

- Create information dissemination opportunities for pre-high school AA students & their families

2. Professional Development

- Seek “value added” opportunities within current District initiatives to assess efforts to close the AA student math achievement gap
 - *San Leandro Unified School District*
 - *Equity/Care Initiatives*
 - *To inform promising practices and demonstrate measurable student outcomes*
 - Provide direct math intervention support to identified AA students



First Year Initiatives

- College Awareness Activities
 - Development of High School College Access Programs and College Preparatory Math Classes Database
 - Create opportunities to share college access program and college prep math class with District 8th graders
 - College: Making It Happen



First Year Initiatives

- **Professional Development**
 - Assess current county-wide and district math initiatives efforts to address the AA achievement gap
 - Research successful culturally relevant curriculum promising practices and strategies that address the AA math achievement gap
 - Identify opportunities to share successful culturally relevant curriculum promising practices and strategies that address the AA math achievement gap



First Year Initiatives

“Measurable Student Outcomes”

- Academic Support
 - San Lorenzo Unified School District
 - Edendale Middle School
 - Before, During and After school math intervention program for selected African American students
 - Close Collaboration with Administration and Math Department
 - Analysis of Process
 - Development of Best Promising Practices to Inform Professional Development Opportunities



The 3 Aims of the Alliance Year 1 Action Plan

1. To provide the Alliance partners with an organizational structure for how they will collaborate to achieve the student achievement and process outcomes.
2. To delineate, with in-depth detail, the extent of the work that each sub-committee, hence each organization, will have to allocate resources for in order to achieve the Alliance's ambitious goals in each of the three focus areas.
3. To provide the Alliance partners with a flexible yet rigorous timeline for when different Tasks and Objectives need to be completed.



Plans for Sustainability Beyond Year 1

1. Extend Goals in each of the Identified Focus Areas
2. Exploration and Application of Additional Funding Sources
3. Extend Invitation to Additional Collaborative Partners



Questions?

Please contact:

Robyn Fisher or Bobbie Brooks

(510) 614-3000



A R C H E S