

CSBA Fast Facts and Figures



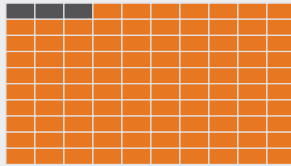
2024–25 CSBA Membership

967
Members



Local educational agencies (school districts, county offices of education and regional occupational centers/programs)

97%
Membership Rate



99.8%
Represented



PreK-12 public school students represented by CSBA member LEAs

California K-12 Public Education¹



938
PreK-12 Public School
Districts in 2024–25

- ▶ This figure does not include county offices of education, state board of education charters, statewide benefit charters, state special schools or non-school locations
- ▶ There are six common administration districts statewide (an elementary school district and a high school district governed by the same elected board)

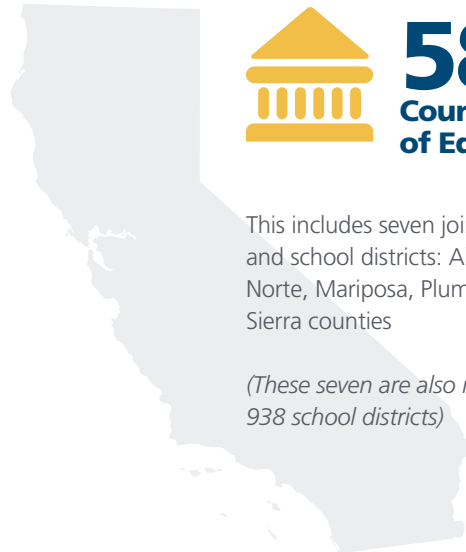
¹Source: California Department of Education



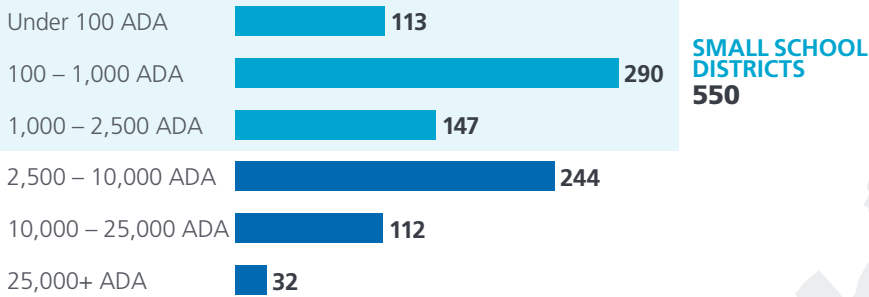
58
County Offices
of Education

This includes seven joint county offices and school districts: Alpine, Amador, Del Norte, Mariposa, Plumas, San Francisco and Sierra counties

(These seven are also reflected in the total 938 school districts)



Sizes of K-12 School Districts (based on average daily attendance)



53%

of California school board members serve on the board of a small school district



251

Public K-12 districts have only **one** school

Types of K-12 School Districts



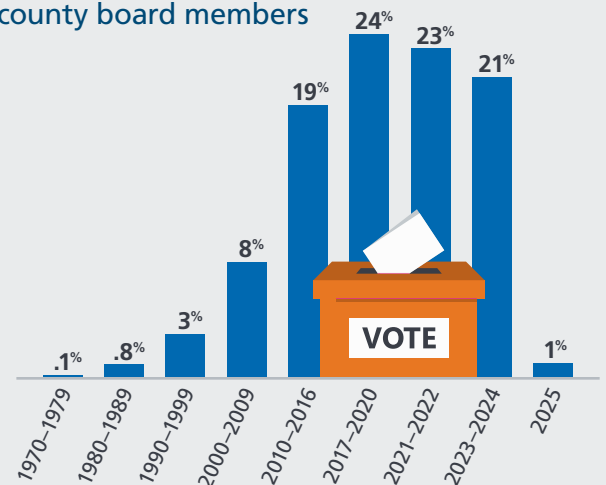
California K-12 Public School Governance²

4,964

Public school district and county board of education seats statewide

Original election or appointment of California school & county board members

School and county governing board sizes



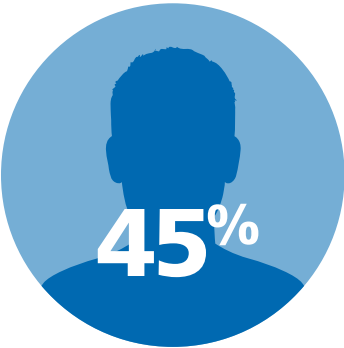
22%

of current district and county board members were elected or appointed between 2023 and 2025

²Source: CSBA Database



Governing Board Member Demographics

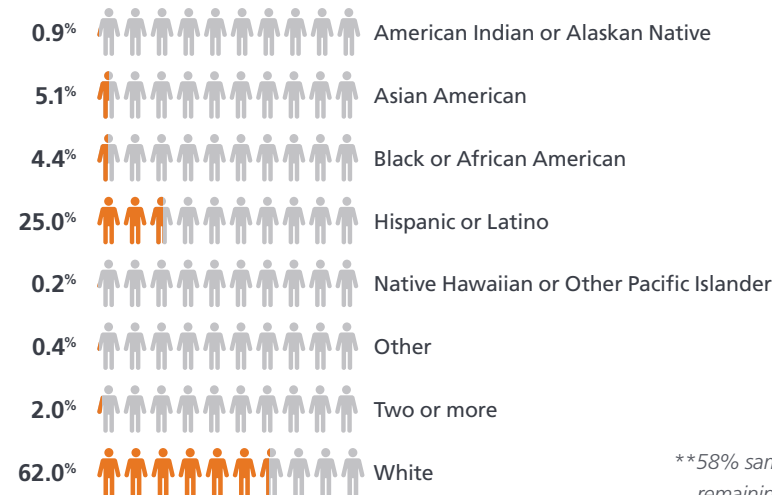


male



female

88% sample size of statewide board members;
remaining 12% "Decline to state" or data not provided



**58% sample size of statewide board members;
remaining 42% "Decline to state" or data not provided

Did you know...?

60%

of current school and county trustees have either children or grandchildren currently attending California public schools.

73%

of current trustees have achieved a college degree or graduate degree.

66%

of trustees are currently employed full-time or part-time.

39%

of trustees were previously employed by a school district or county office of education, and **18%** of trustees currently are.

Source: CSBA 2024–25 member census